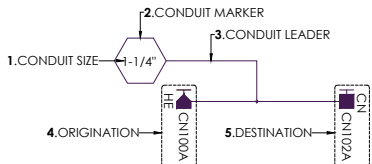


GUIDLINES FOR WIRE MANAGEMENT RACEWAYS AND CONDUITS:

THE FOLLOWING GUIDELINES REGARDING WIRE MANAGEMENT RACEWAY AND CONDUIT STANDARDIZATION ARE TO BE FOLLOWED ON THIS PROJECT.

**CONDUIT DETAIL**  
LOCATED ON THE FLOOR PLAN ARE SYMBOLS FOR EACH CONDUIT ORIGINATION, DESTINATION AND SIZE. INCLUDED WITH EACH CONDUIT DETAIL IS A COMPILATION OF (5) PARTS.



**1.CONDUIT SIZE**  
THE **CONDUIT SIZE** INDICATES THE DIAMETER OF THE CONDUIT TO BE USED.

**2.CONDUIT MARKER**  
THE **CONDUIT MARKER** IS THE SYMBOL INDICATING THAT A CONDUIT IS PRESENT.

**3.CONDUIT LEADER**  
THE **CONDUIT LEADER** ATTACHES THE CONDUIT MARKER TO THE CONDUIT DESTINATION/ORIGINATION LINE.

**4.ORIGINATION**  
THE **ORIGINATION** SYMBOL INDICATES THE CONDUIT SYSTEM TYPE, ROOM NUMBER AND POSITION OF THE HEAD END. IN CASES WHERE A CONDUIT IS TERMINATED BETWEEN MULTIPLE FLOORS, AN ARROW WITH ROOM NUMBER WILL BE REPRESENTED IN PLACE OF THE ORIGINATION SYMBOL.

**5.DESTINATION**  
THE **DESTINATION** SYMBOL INDICATES THE CONDUIT SYSTEM TYPE, ROOM NUMBER AND POSITION OF THE CONDUIT END POINT.

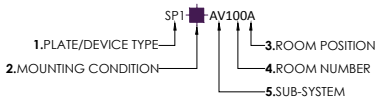
**ORIGINATION POINT OF ALL CONDUITS**  
THE ORIGINATION POINT OF ALL CONDUITS WILL TYPICALLY INCLUDE THE DESIGNATION HE, IDF OR CPB (CONDUIT PULL BOX) SHOWN WITHIN THE DRAWINGS AND REFERENCED IN THE WIRE/CONDUIT SCHEDULE.

**DESTINATION POINT OF ALL CONDUITS**  
THE DESTINATION POINT OF ALL CONDUITS WILL BE SPECIFIED WITHIN THE WIRE/CONDUIT SCHEDULE.

GUIDELINES FOR DEVICE DETAIL AND NUMBERING:

THE FOLLOWING GUIDELINES REGARDING WIRE MANAGEMENT, NUMBERING METHODOLOGY AND CABLE SHEATHING COLOR STANDARDIZATION ARE TO BE FOLLOWED ON THIS PROJECT.

**DEVICE DETAIL**  
LOCATED ON THE FLOOR PLAN ARE SYMBOLS FOR EACH LOW VOLTAGE DEVICE. INCLUDED WITH EACH SYMBOL IS A COMPILATION OF (5) SPECIFIC ATTRIBUTES.



**1.PLATE/DEVICE TYPE**  
THE **PLATE OR DEVICE TYPE** IS INDICATED BY 2 OR 3 ALPHA CHARACTERS WHICH REPRESENT THE DEVICE AT NOTED LOCATIONS (E.G. TV = TELEVISION, SP = SPEAKER, ETC.). THE NUMERIC CHARACTERS (E.G. 1, 2, 3, ETC.) FOLLOWING THE DEVICE TYPE REFERENCES THE SPECIFIC MANUFACTURE AND MODEL WITHIN THE DEVICE SCHEDULE.

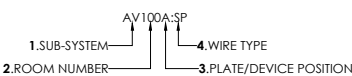
**2.MOUNTING CONDITION**  
THE **MOUNTING CONDITION** REFERENCES THE POSITION IN WHICH THE PLATE OR DEVICE WILL BE MOUNTED (E.G. IN-WALL, IN-CEILING, ETC.). EACH SYMBOL CAN BE FOUND ON THE SYMBOL SCHEDULE WHICH IS LOCATED ON THE "TITLE SHEET" OR EACH FLOOR PLAN PAGE WITHIN THE DRAWING PACKAGE.

**3.SUB-SYSTEM**  
THE **SUB-SYSTEM** REFERENCE IDENTIFIES WHICH SUB-SYSTEM EACH SYMBOL IS ASSOCIATED WITH.(E.G. AV100A = AUDIO VIDEO)

**4.ROOM NUMBER**  
THE **ROOM NUMBER** REFERENCE IDENTIFIES THE ROOM IN WHICH THE DEVICE RESIDES. (E.G. AV100A = ROOM NUMBER 100)

**5.ROOM POSITION**  
THE **ROOM POSITION** REFERENCE IDENTIFIES THE UNIQUE LOCATION IN WHICH THE DEVICE IS LOCATED WITHIN A ROOM. (E.G. AV103A = LOCATION A)

**WIRE LABELING**  
ALL INTERCONNECTS AND WIRES ARE TO BE LABELED AT BOTH "ORIGIN" LOCATION AND "DESTINATION" LOCATION WITH THE APPROPRIATE NUMBER. WIRE NUMBERS CAN BE DERIVED FROM THE WIRE/CONDUIT SCHEDULES. USING THE "WIRE ID" COLUMN, EACH WIRE IS LISTED WITH AN ASSOCIATED ALPHANUMERIC NUMBER (E.G. AV103A,SP).



THIS DESIGNATION SHALL BE MARKED ON THE WIRE USING A PANDUIT OR SIMILAR LABEL MAKER. THE METHODOLOGY OF WIRE NUMBERING IS AS FOLLOWS:

1. THE LEADING LETTERS OF A WIRE NUMBER REFER TO THE SUB-SYSTEM. THE **SUB-SYSTEM** REFERENCE IDENTIFIES WHICH SUB-SYSTEM EACH SYMBOL IS ASSOCIATED WITH. (E.G. AV100A = AUDIO VIDEO)
2. THE NUMBER FOLLOWING THE SUB-SYSTEM REFERS TO THE ROOM NUMBER. THE **ROOM NUMBER** REFERENCE IDENTIFIES THE ROOM IN WHICH THE DEVICE RESIDES. (E.G. AV100A = ROOM NUMBER 100)
3. THE LETTER FOLLOWING THE ROOM NUMBER REFERS TO THE ROOM POSITION. THE **ROOM POSITION** REFERENCE IDENTIFIES THE UNIQUE LOCATION IN WHICH THE DEVICE IS LOCATED WITHIN A ROOM. (E.G. AV103A = LOCATION A)
4. THE LETTERS FOLLOWING THE UNIQUE LOCATION IDENTIFIER REFER TO THE GENERAL WIRE TYPE. (E.G. AV100A,SP = SPEAKER WIRE)

IN SOME CASES MULTIPLE CABLES OF THE SAME TYPE WILL BE RUN TO THE SAME LOCATION. IN THESE INSTANCES A NUMBER IS ATTACHED AT THE END OF THE "WIRE ID" (E.G. AV100A,SP1 AND AV100A,SP2). A "WIRE STANDARDS" SPECIFICATION IS ATTACHED TO THE "WIRE/CONDUIT SCHEDULES". THE "WIRE STANDARDS" DOCUMENT WILL CALL OUT WIRE COMPOSITION AND SPECIFY WHICH MANUFACTURERS PRODUCT WILL BE AUTHORIZED FOR INSTALLATION.

**ORIGINATION POINT OF ALL WIRES**  
THE ORIGINATION POINT OF ALL WIRES WILL TYPICALLY INCLUDE THE DESIGNATION HE, AV OR IDF SHOWN WITHIN THE DRAWINGS AND REFERENCED IN THE WIRE/CONDUIT SCHEDULE.

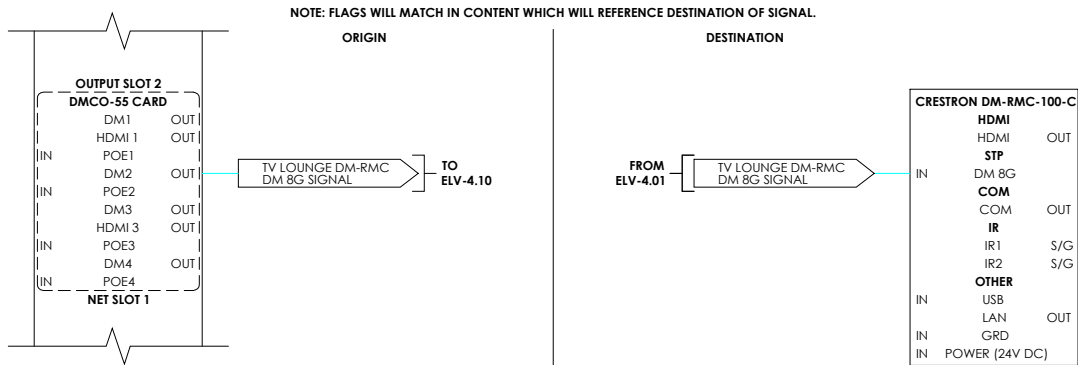
**DESTINATION POINT OF ALL WIRES**  
THE DESTINATION POINT OF ALL WIRES WILL BE SPECIFIED WITHIN THE WIRE/CONDUIT SCHEDULE.

WIRE SCHEDULE

	WIRE ID	WIRE DESCRIPTION	WIRE APPLICATION	DEVICE TYPE	ORIGIN NAME	HEAD END LOCATION	ORIGIN POSITION	DESTINATION NAME	DESTINATION LOCATION	DESTINATION POSITION	NOTES
1	AV104D,SP1	14/2 Speaker Cable	Speaker Connection to Amplifier	A/V	TV LOUNGE	104AV	AV104A	TV LOUNGE	104	AV104D	SPLIT TO INDIVIDUAL RUNS
2	AV104D,SP2	14/2 Speaker Cable	Speaker Connection to Amplifier	A/V	TV LOUNGE	104AV	AV104A	TV LOUNGE	104	AV104D	SPLIT TO INDIVIDUAL RUNS
3	AV104D,SP3	14/2 Speaker Cable	Speaker Connection to Amplifier	A/V	TV LOUNGE	104AV	AV104A	TV LOUNGE	104	AV104D	SPLIT TO INDIVIDUAL RUNS
4	AV104E,SUB	14/2 Speaker Cable	Subwoofer Connection to Amplifier	A/V	TV LOUNGE	104AV	AV104A	TV LOUNGE	104	AV104E	
5	AV104F,SP	14/2 Speaker Cable	Speaker Connection to Amplifier	A/V	TV LOUNGE	104AV	AV104A	TV LOUNGE	104	AV104F	
6	AV104G,SP	14/2 Speaker Cable	Speaker Connection to Amplifier	A/V	TV LOUNGE	104AV	AV104A	TV LOUNGE	104	AV104G	

WIRE TYPE STANDARD

SUFFIX	WIRE DESCRIPTION	WIRE APPLICATION	DEVICE TYPE	MANUFACTURER	MODEL	COLOR	NOTES
KSU	Cat6 4-pr Cable	Telephone System Voice Extension	VOICE	BELDEN	2413	BLUE	Plenum Rated
LAN	Cat6 4-pr Cable	Local Area Network	DATA	BELDEN	2413	GREEN	Plenum Rated
UTP	Cat6 4-pr Cable	Data/Video	A/V	BELDEN	2413	YELLOW	Plenum Rated
SPARE	Cat6 4-pr Cable	Spare	A/V	BELDEN	2413	ORANGE	Plenum Rated
CX	RG6 Quad Shielded Coaxial Cable	Television Video/Audio/CATV/Satellite Service	A/V	BELDEN	7914P	WHITE	Plenum Rated



GENERAL DETAILS

AV	AUDIO/VIDEO HEAD END
TV	TELEVISION OUTLET
TV	TELEVISION FLOOR OUTLET
TV	TELEVISION OUTLET IN-CEILING
AV	AUDIO/VIDEO OUTLET
SP	SPEAKER IN-CEILING
SP	SPEAKER IN-WALL
SJ	SPEAKER JACK OUTLET
SUB	SUBWOOFER UNDER FLOOR
SUB	SUBWOOFER IN-WALL
SUB	SUBWOOFER IN ROOM/IN LANDSCAPE
VC	VOLUME CONTROL
PJ	PROJECTOR OUTLET IN-CEILING
CATV	CATV HEAD END
SAT	SAT ANTENNA
CN	CONDUIT OUTLET
ART	MOTORIZED CANVAS
IDF	AUDIO/VIDEO INTERMEDIATE DISTRIBUTION FRAME
AVS	DEDICATED CIRCUIT (TO DEDICATED A/V SUB PANEL)

ENTERTAINMENT SYMBOLS

OC	OVERLAY CONTROL HEAD END
OC	OVERLAY CONTROL DEVICE
TP	TOUCH PANEL IN-WALL
TP	WIRELESS TOUCH PANEL
TS	TEMPERATURE SENSOR

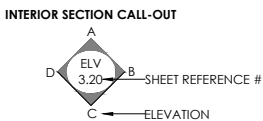
OVERLAY CONTROL SYMBOLS

COM	COMMUNICATIONS HEAD END
COM	COMMUNICATIONS CONNECTION
COM	COMMUNICATIONS - FLOOR MOUNTED
DP	DOORPHONE
WAP	WIRELESS ACCESS POINT
WFI	DISTRIBUTED ANTENNA SYSTEM - WIFI
CEL	DISTRIBUTED ANTENNA SYSTEM - CELLULAR
IDF	COMMUNICATIONS INTERMEDIATE DISTRIBUTION FRAME

COMMUNICATION SYMBOLS

SEC	SECURITY SYSTEM HEAD END
SK	SECURITY KEYPAD
DS	DOOR CONTACT
WS	WINDOW CONTACT
AS	ALARM SCREEN
MD	MOTION DETECTOR - CEILING MOUNTED
MD	MOTION DETECTOR - WALL MOUNTED
AD	AUDIBLE DEVICE
GB	GLASS BREAK DETECTOR
SS	SHOCK SENSOR
SD	SMOKE DETECTOR
HD	HEAT DETECTOR
CO	CARBON MONOXIDE SENSOR - CEILING MOUNTED
CO	CARBON MONOXIDE SENSOR - WALL MOUNTED
SL	SECURITY LIGHTING
DR	DOOR RELEASE - CEILING MOUNTED
DR	DOOR RELEASE - WALL MOUNTED
AC	ACCESS CONTROL KEYPAD
RTE	RELEASE TO EXIT BUTTON
CC	SURVEILLANCE CAMERA - CEILING MOUNTED
CC	SURVEILLANCE CAMERA - WALL MOUNTED
FL	FLOOD SENSOR
PB	PANIC BUTTON
PB	PANIC BUTTON (WIRED THROUGH FLOOR BOX)
IS	INTERCOM STATION
CN	CONDUIT OUTLET
TV	SECURITY MONITOR
IDF	SECURITY INTERMEDIATE DISTRIBUTION FRAME
CN	CONDUIT END POINT
CPB	CONDUIT PULL BOX

SECURITY/FIRE SYMBOLS



ARCHITECTURAL SYMBOL SCHEDULE

AC	= ACCESS CONTROL
ACE	= ACCESS CONTROL (EXTERIOR RUNS)
ACS	= ACCESS CONTROL SYSTEM
AD	= AUDIBLE DEVICE
ART	= ARTWORK (MOTORIZED CANVAS)
AS	= ALARM SCREEN
AV	= AUDIO/VIDEO
AVS	= AUDIO/VIDEO SYSTEM
BD	= BUS DEVICE
CATV	= CABLE TELEVISION
CC	= CLOSED CIRCUIT CAMERA
CCE	= CLOSED CIRCUIT CAMERA (EXTERIOR RUNS)
CCTV	= CLOSED CIRCUIT TELEVISION
CEL	= CELLULAR
CN	= CONDUIT
CO	= CARBON MONOXIDE
CON	= CONCEPTUAL (DRAWING SET)
COM	= COMMUNICATIONS
CPB	= CONDUIT PULL BOX
CTA	= CATEGORY CABLE - AUDIO
CTV	= CATEGORY CABLE - VIDEO
CX	= COAXIAL
CXE	= COAXIAL (EXTERIOR RUNS)
DP	= DOOR PHONE
DPE	= DOOR PHONE (EXTERIOR RUNS)
DR	= DOOR RELEASE
DRE	= DOOR RELEASE (EXTERIOR RUNS)
DS	= DOOR SENSOR
DSE	= DOOR SENSOR (EXTERIOR RUNS)
ELV	= ELECTRONIC LOW VOLTAGE (DRAWING SET)
FL	= FLOOD SENSOR
FO	= FIBER OPTIC
GB	= GLASS BREAK
HD	= HEAT DETECTOR
HE	= HEAD END
HVAC	= HEATING, VENTILATION AND AIR COOLING
IDF	= INTERMEDIATE DISTRIBUTION FRAME
IS	= INTERCOM STATION
KSU	= KEY SYSTEM UNIT
LAN	= LOCAL AREA NETWORK
LANE	= LOCAL AREA NETWORK (EXTERIOR RUNS)
LC	= LIFT CONTROL
LL	= LINE LEVEL
MD	= MOTION DETECTOR
MDE	= MOTION DETECTOR (EXTERIOR RUNS)
MDF	= MAIN DISTRIBUTION FRAME
MS	= MOISTURE SENSOR
OC	= OVERLAY CONTROL
OCS	= OVERLAY CONTROL SYSTEM
PB	= PANIC BUTTON
PH	= PHONE
PJ	= PROJECTOR
RN	= REMOTE NODE
RP	= REMOTE POWER
RPE	= REMOTE POWER (EXTERIOR RUNS)
RTE	= REQUEST TO EXIT
RTEE	= REQUEST TO EXIT (EXTERIOR RUNS)
SAT	= SATELLITE TELEVISION
SEC	= SECURITY SYSTEM
SD	= SMOKE DETECTOR
SJ	= SPEAKER JACK
SK	= SECURITY KEYPAD
SL	= SECURITY LIGHTING
SP	= SPEAKER
SPE	= SPEAKER (EXTERIOR RUNS)
SS	= SHOCK SENSOR
SUB	= SUBWOOFER
TH	= THERMOSTAT
TN	= THERMOSTAT NETWORK
TP	= TOUCH PANEL
TS	= TEMPERATURE SENSOR
TV	= TELEVISION
UTP	= UNSHIELDED TWISTED PAIR
VC	= VOLUME CONTROL
WAP	= WIRELESS ACCESS POINT
WHA	= WHOLE HOUSE AUDIO
WHV	= WHOLE HOUSE VIDEO
WFI	= WI-FI
WS	= WINDOW SENSOR

ABBREVIATIONS

BLOCK DIAGRAM SIGNAL LINE TYPES	
—	AUDIO
—	VIDEO
—	DIGITAL AUDIO
—	OVERLAY CONTROL
—	LAN
—	POWER

SIGNAL LINE TYPES

ELV-1.00	TITLE SHEET
CON-2.10H	CONCEPTUAL LAYOUT PLAN FIRST FLOOR AUDIO VIDEO
CON-2.10S	CONCEPTUAL LAYOUT PLAN FIRST FLOOR SECURITY
CON-2.11H	CONCEPTUAL LAYOUT PLAN FIRST FLOOR WI-FI
ELV-2.10H	GENERAL DEVICE LAYOUT PLAN FIRST FLOOR AUDIO VIDEO
ELV-2.10S	GENERAL DEVICE LAYOUT PLAN FIRST FLOOR SECURITY
ELV-2.10CN	CONDUIT LAYOUT PLAN FIRST FLOOR COMPOSITE
ELV-2.80	WIRE INFRASTRUCTURE SCHEDULE 1
ELV-2.81	WIRE INFRASTRUCTURE SCHEDULE 2
ELV-3.13	LIVING ROOM 107 COORDINATED DEVICE DRAWINGS
ELV-3.14	DINING ROOM 108 COORDINATED DEVICE DRAWINGS
ELV-3.15	FAMILY ROOM 111 AND LIVING DECK 002 COORDINATED DEVICE DRAWINGS
ELV-3.50	CONCEPTUAL LAYOUT PLAN MAIN DISTRIBUTION FRAME
ELV-3.60	MAIN DISTRIBUTION FRAME DEVICE PLACEMENT ELEVATIONS
ELV-3.61	MAIN DISTRIBUTION FRAME RACK ELEVATIONS 1
ELV-3.62	MAIN DISTRIBUTION FRAME RACK ELEVATIONS 2
ELV-3.70	MAIN DISTRIBUTION FRAME RACK 1 DEMARCATION
ELV-3.80	MAIN DISTRIBUTION FRAME CONDUIT PLACEMENT ELEVATION
ELV-4.00	AUDIO VIDEO DISTRIBUTION BLOCK DIAGRAM 1
ELV-4.01	AUDIO VIDEO DISTRIBUTION BLOCK DIAGRAM 2
ELV-4.05	CCTV DISTRIBUTION BLOCK DIAGRAM
ELV-4.10	BEDROOM 106, DINING ROOM 108, AND FAMILY ROOM 111 BLOCK DIAGRAMS
ELV-4.11	MEDIA ROOM BLOCK DIAGRAM
ELV-4.20	OVERLAY CONTROL BLOCK DIAGRAM
ELV-5.00	DEVICE SCHEDULE
ELV-6.00	PLATE DETAILS 1
ELV-6.01	PLATE DETAILS 2
ELV-6.10	INSTALLATION DETAILS

SHEET INDEX

DRAWINGS INCLUDED WITHIN SPECIFICATION:

THERE ARE AN EXTENSIVE COLLECTION OF DRAWINGS PROVIDED WITH EACH SYSTEM SPECIFICATION. THESE DRAWINGS ARE ORGANIZED FUNCTIONALLY IN ACCORDANCE WITH THE FOLLOWING OUTLINE:

**ELV-1.00 TITLE SHEET**  
THIS COVER PAGE CONTAINS THE TITLE BLOCK, PROJECT INFORMATION AND A DETAILED LISTING OF ALL NOTES AND SYMBOL DEFINITIONS USED THROUGHOUT THE PROJECT.

**ELV-2.NN FLOORPLANS**  
THESE SERIES OF DRAWINGS ARE ORGANIZED BY LEVEL, PRESENTING THE LOCATIONS OF DEVICES, PRODUCT CALLOUTS AND CONSTRUCTION NOTES WITHIN THE FLOORPLANS.

**ELV-3.NN DEVICE PLACEMENT ELEVATIONS AND SECTIONS**  
THESE SERIES OF DRAWINGS ARE ORGANIZED BY LEVEL, PRESENTING ROOM DETAILS WITHIN THE REFLECTED CEILING PLAN AND ELEVATIONS WITH DEVICES, ROOM PLATE DETAILS, HEAD END WIRING CABINETS AND DEMARCATION PANELS, ETC.

**ELV-4.NN BLOCK DIAGRAMS**  
THESE SERIES OF DRAWINGS ARE ORGANIZED BY SYSTEM AND AREA TO PRESENT THE PHYSICAL CONNECTIVITY OF EACH SYSTEM.

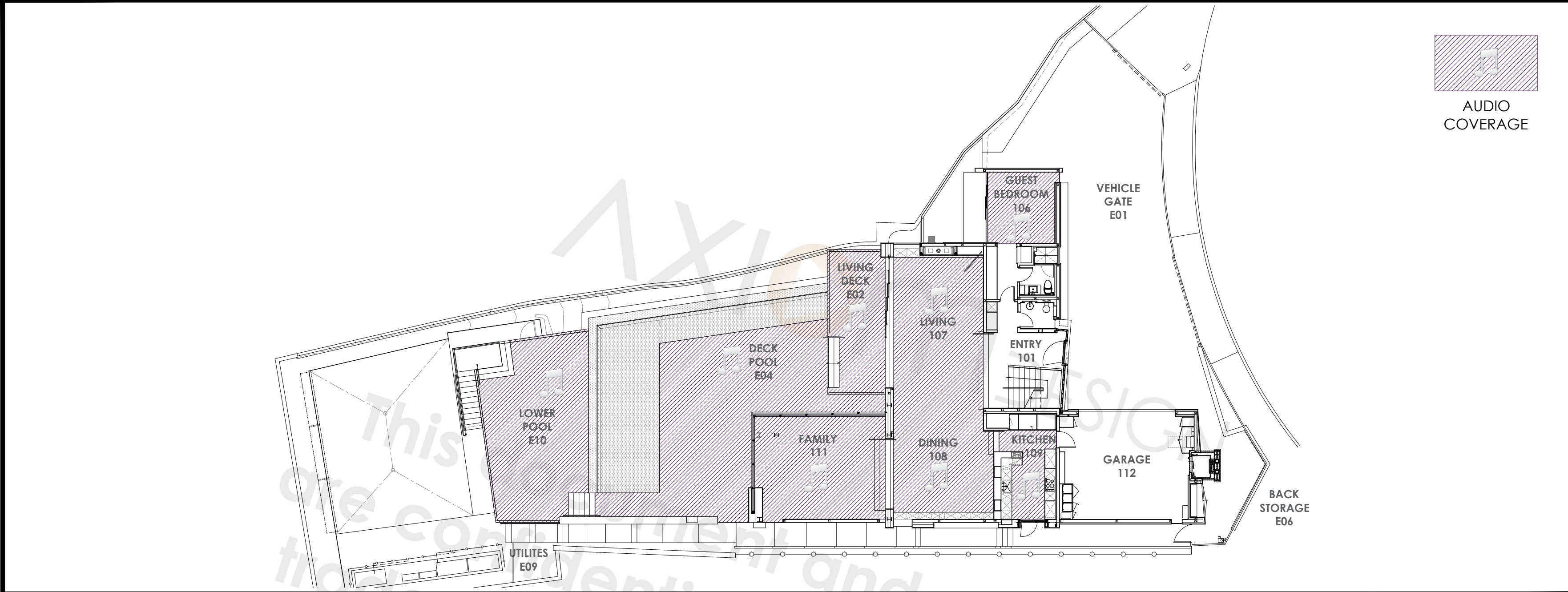
**ELV-5.NN DEVICE SCHEDULES**  
THESE SERIES OF DRAWINGS SUPPLY THE PRODUCT SPECIFIED AND CABLING ALLOWED.

DOCUMENTATION RIGHTS:

THE INCLUDED DRAWINGS, DETAILS, SPECIFICATIONS, IDEAS AND CONCEPTS ARE THE SOLE PROPERTY OF AXIOM DESIGN, INC.. ANY USE OF THESE DOCUMENTS WITHOUT THE EXPRESS WRITTEN CONSENT OF AXIOM DESIGN IS PROHIBITED. THE PURPOSE OF THESE SPECIFICATIONS AND INSTRUCTIONS IS TO PROVIDE A CONSISTENT OUTLINE SO THAT AN EVEN BASELINE CAN BE ESTABLISHED FOR EVALUATING CONTRACTORS' BIDS, IF APPLICABLE.

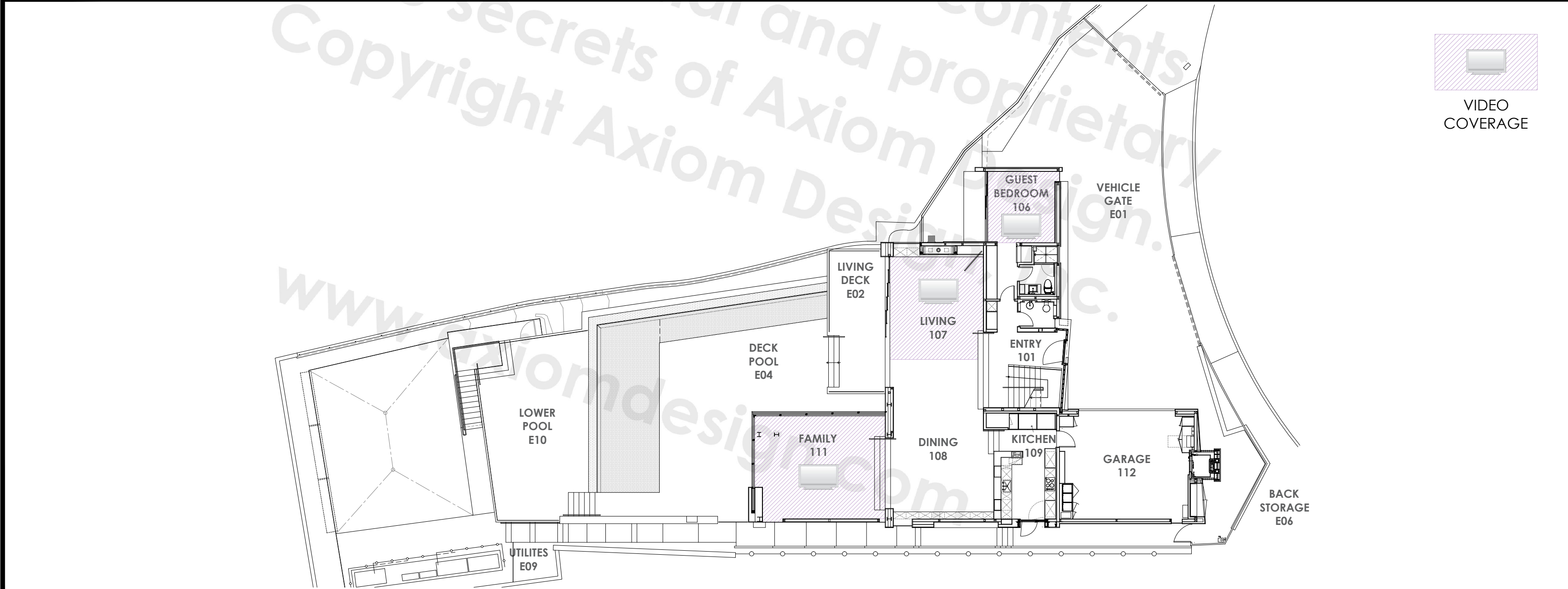
DRAWING DESCRIPTIONS

SAMPLE PROJECT  
1234 SAMPLE PROJECT DR  
PLEASANTON, CA 94588



A FIRST FLOOR DISTRIBUTED AUDIO COVERAGE

SCALE: 1/8"=1'-0"



B FIRST FLOOR DISTRIBUTED VIDEO COVERAGE

SCALE: 1/8"=1'-0"

**SAMPLE PROJECT**  
1234 SAMPLE PROJECT DR  
PLEASANTON, CA 94588

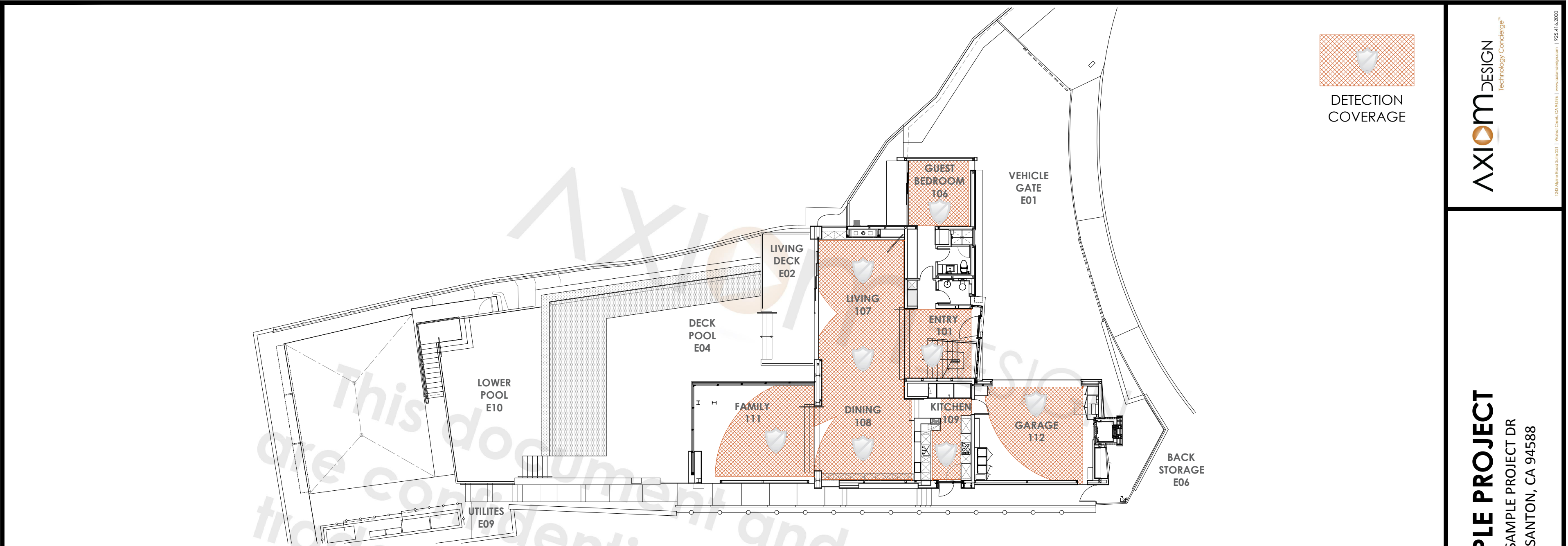
SHEET NAME:  
CONCEPTUAL LAYOUT PLAN  
FIRST FLOOR AUDIO VIDEO

REVISIONS	BY

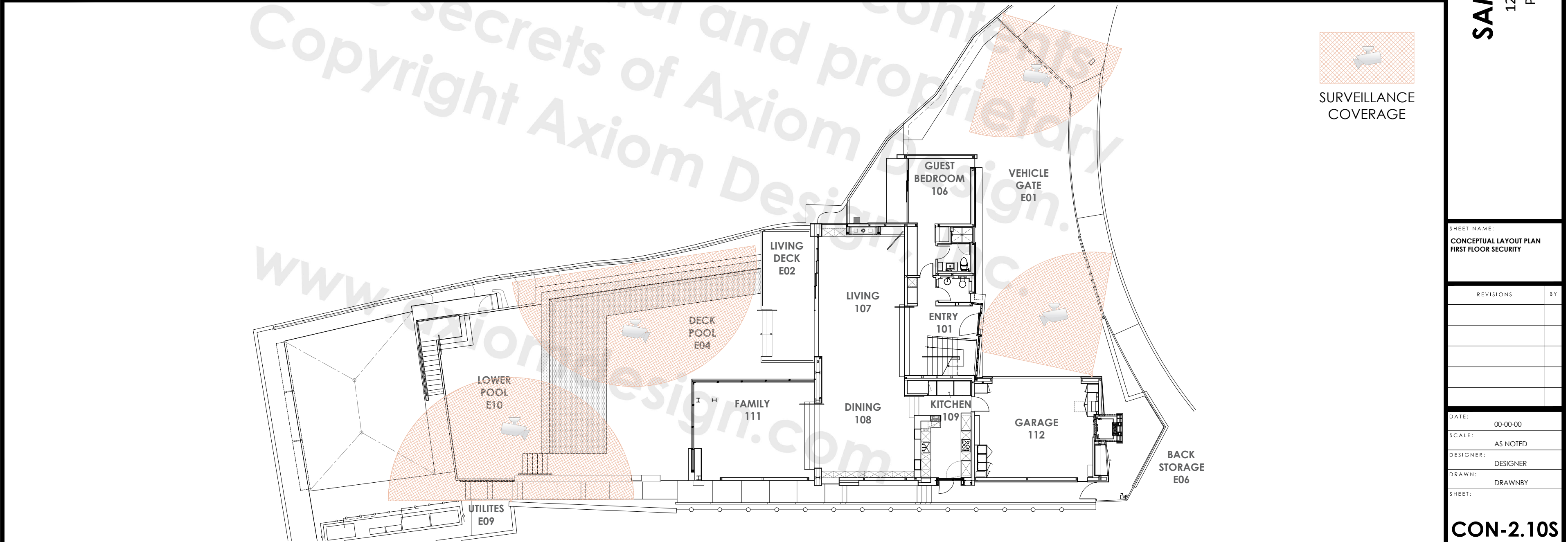
DATE: 00-00-00  
SCALE: AS NOTED  
DESIGNER: DESIGNER  
DRAWN: DRAWNBY  
SHEET:

**CON-2.10H**





A FIRST FLOOR MOTION DETECTOR COVERAGE SCALE: 1/8"=1'-0"



B FIRST FLOOR SURVEILLANCE COVERAGE SCALE: 1/8"=1'-0"

**SAMPLE PROJECT**  
1234 SAMPLE PROJECT DR  
PLEASANTON, CA 94588

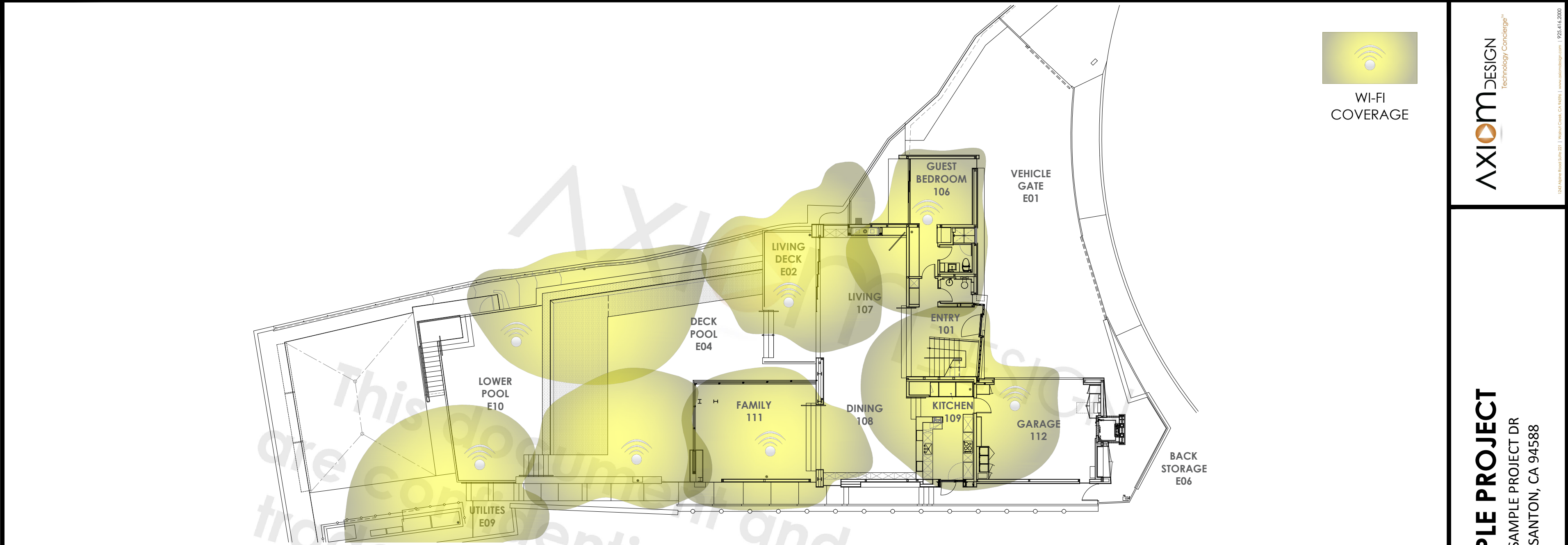
SHEET NAME:  
CONCEPTUAL LAYOUT PLAN  
FIRST FLOOR SECURITY

REVISIONS	BY

DATE:	00-00-00
SCALE:	AS NOTED
DESIGNER:	DESIGNER
DRAWN:	DRAWNBY
SHEET:	

CON-2.10S



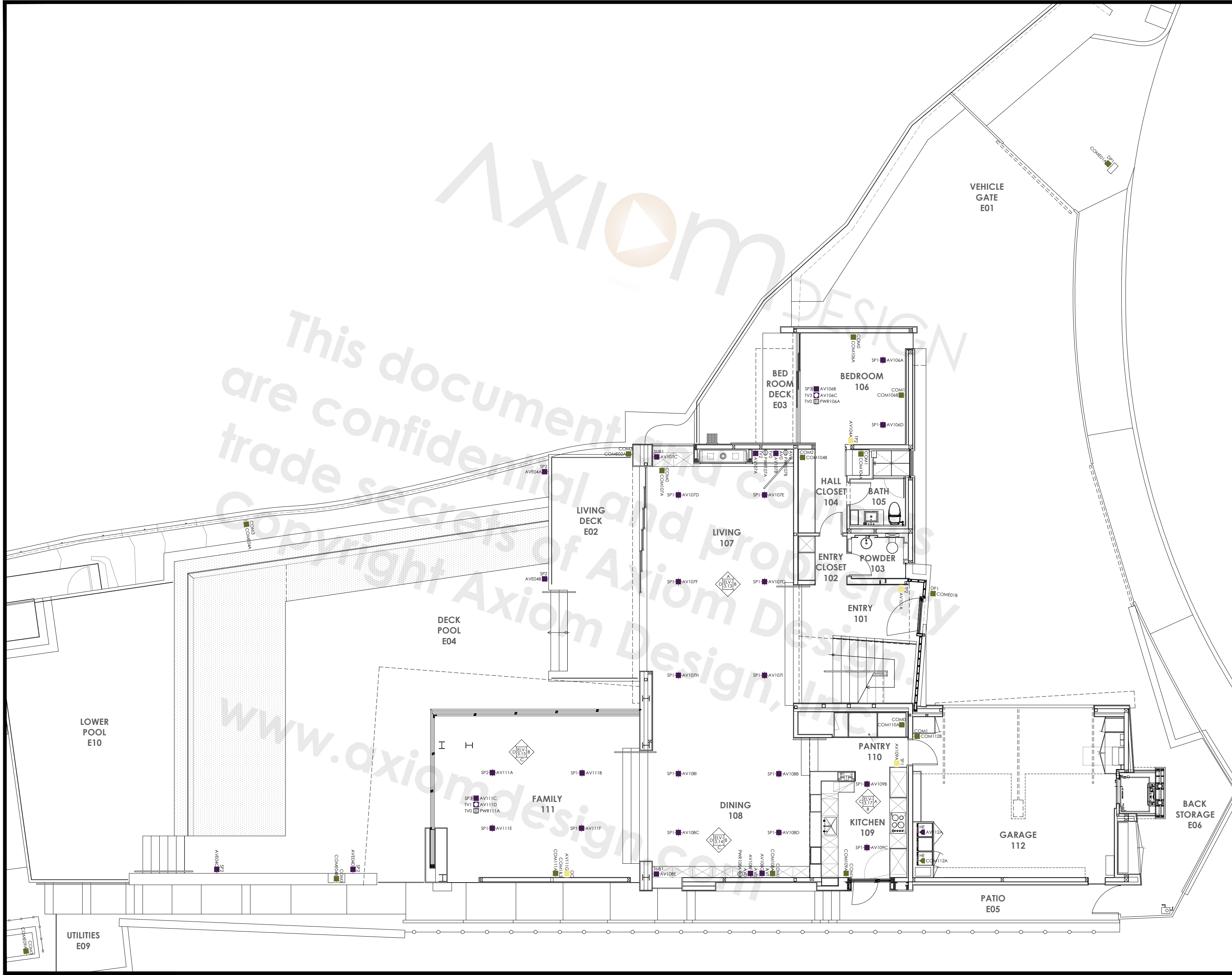


A FIRST FLOOR WIFI COVERAGE

SCALE: 1/8"=1'-0"

**SAMPLE PROJECT**  
1234 SAMPLE PROJECT DR  
PLEASANTON, CA 94588

SHEET NAME: CONCEPTUAL LAYOUT PLAN FIRST FLOOR WI-FI	
REVISIONS	BY
DATE:	00-00-00
SCALE:	AS NOTED
DESIGNER:	DESIGNER
DRAWN:	DRAWNBY
SHEET:	
CON-2.11H	



**SAMPLE PROJECT**  
1234 SAMPLE PROJECT DR  
PLEASANTON, CA 94588

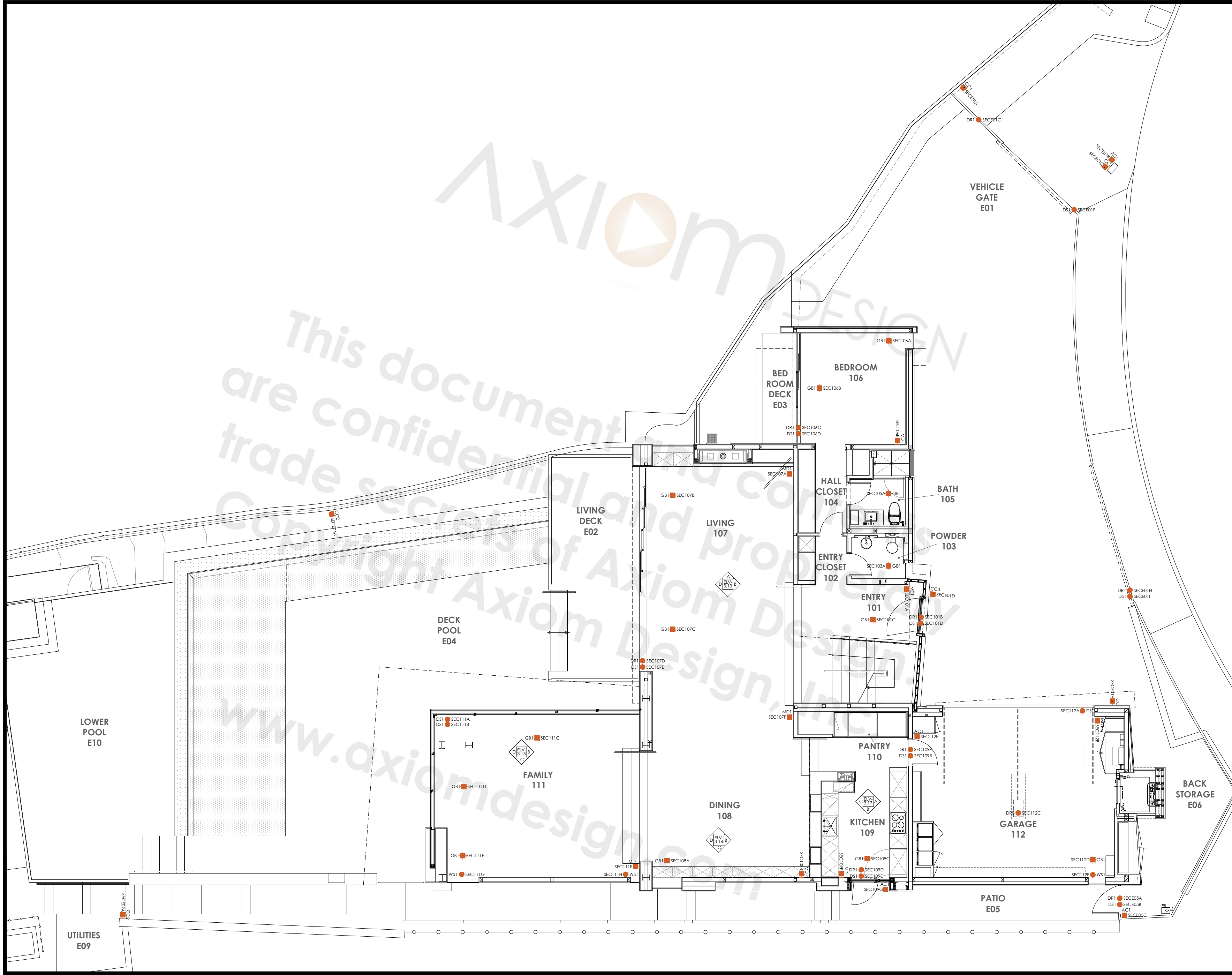
SHEET NAME:  
GENERAL DEVICE LAYOUT PLAN  
FIRST FLOOR AUDIO VIDEO

REVISIONS	BY

DATE: 00-00-00  
SCALE: 1/4"=1'-0"  
DESIGNER: DESIGNER  
DRAWN: DRAWNBY  
SHEET:

ELV-2.10H





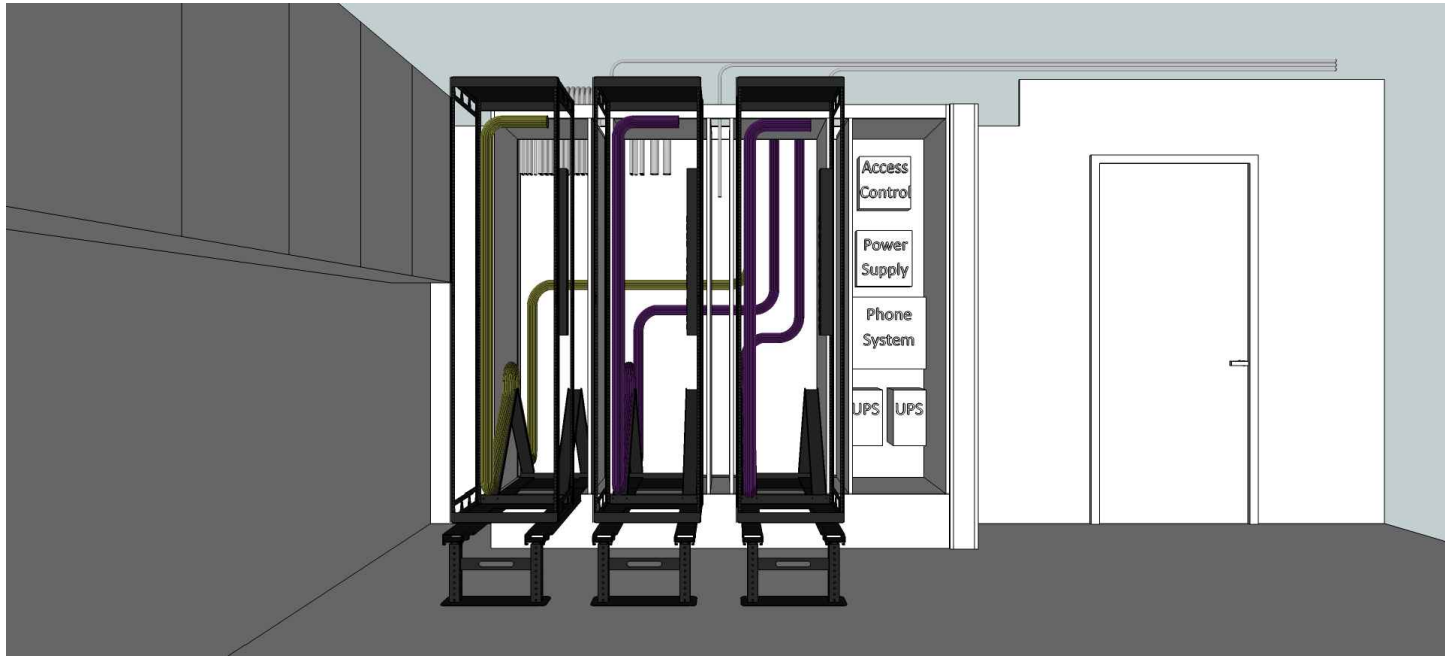
**SAMPLE PROJECT**  
1234 SAMPLE PROJECT DR  
PLEASANTON, CA 94588

SHEET NAME:  
GENERAL DEVICE LAYOUT PLAN  
FIRST FLOOR SECURITY

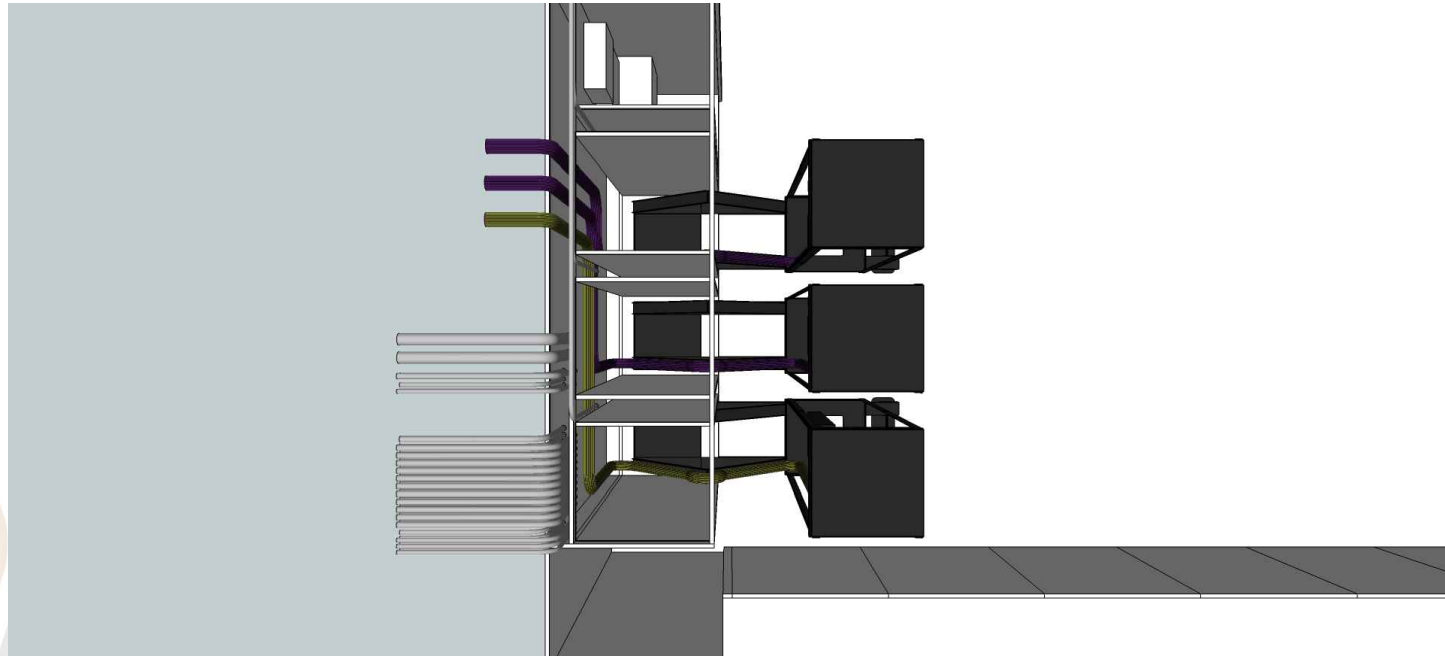
REVISIONS	BY

DATE: 00-00-00  
SCALE: 1/4"=1'-0"  
DESIGNER: DESIGNER  
DRAWN: DRAWNBY  
SHEET:

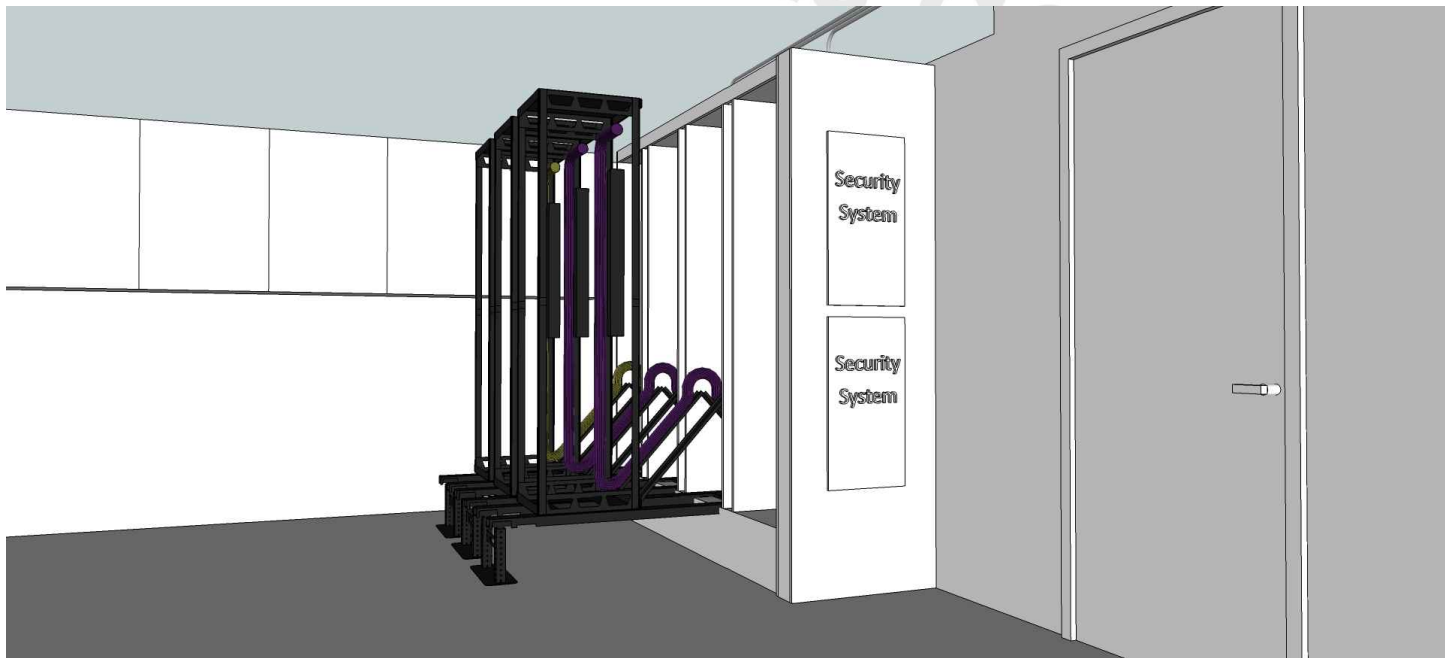
**ELV-2.10S**



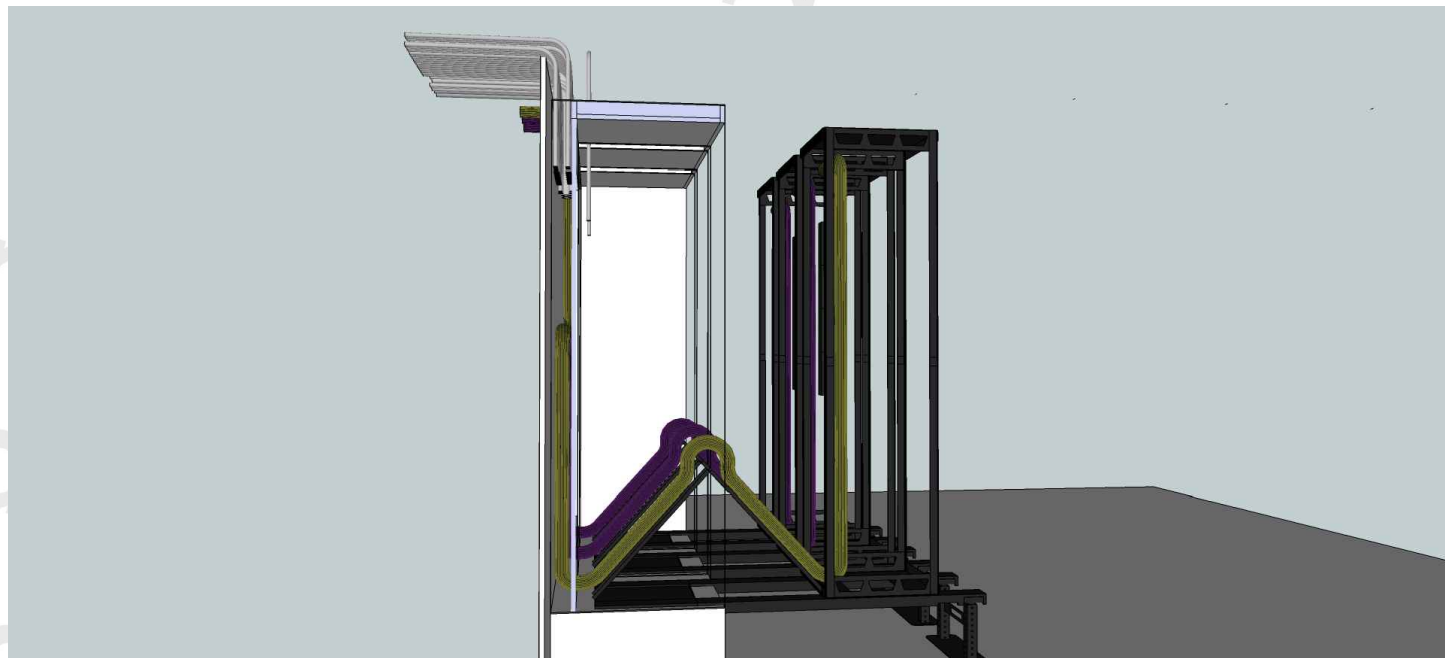
A FRONT VIEW



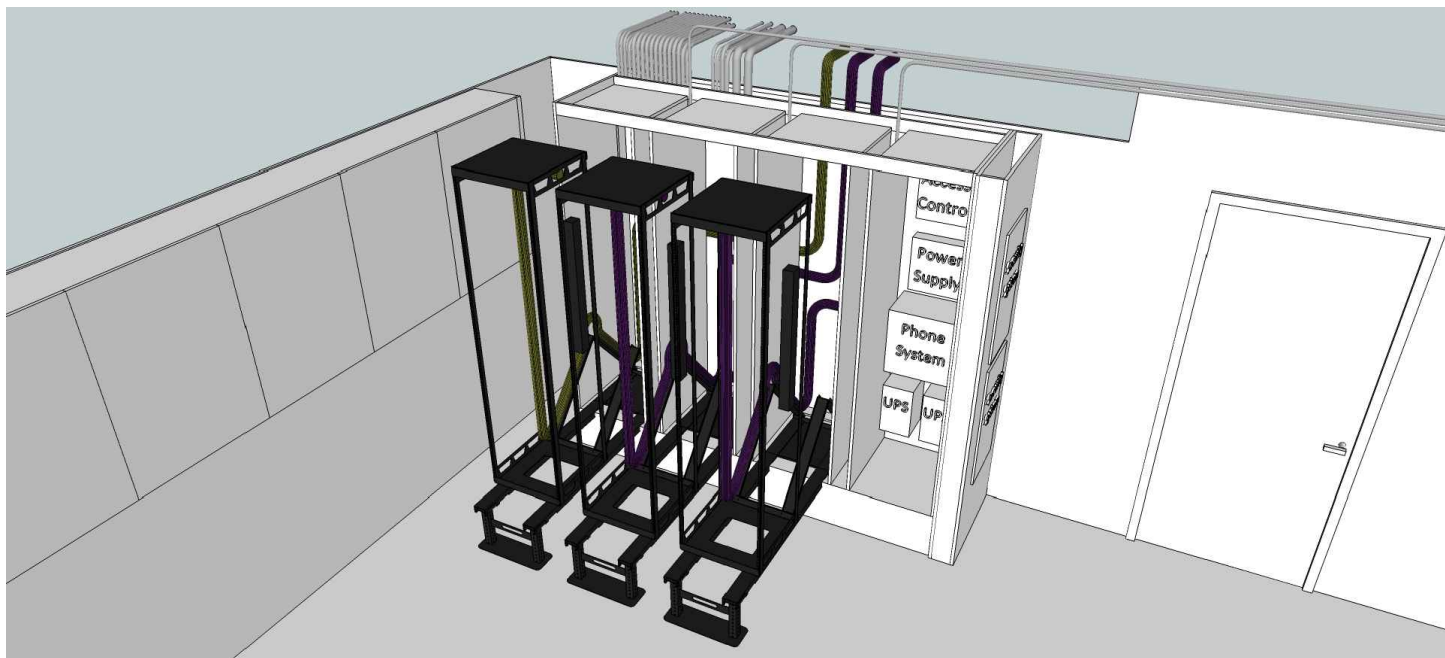
B TOP VIEW (SEE THROUGH PANELS)



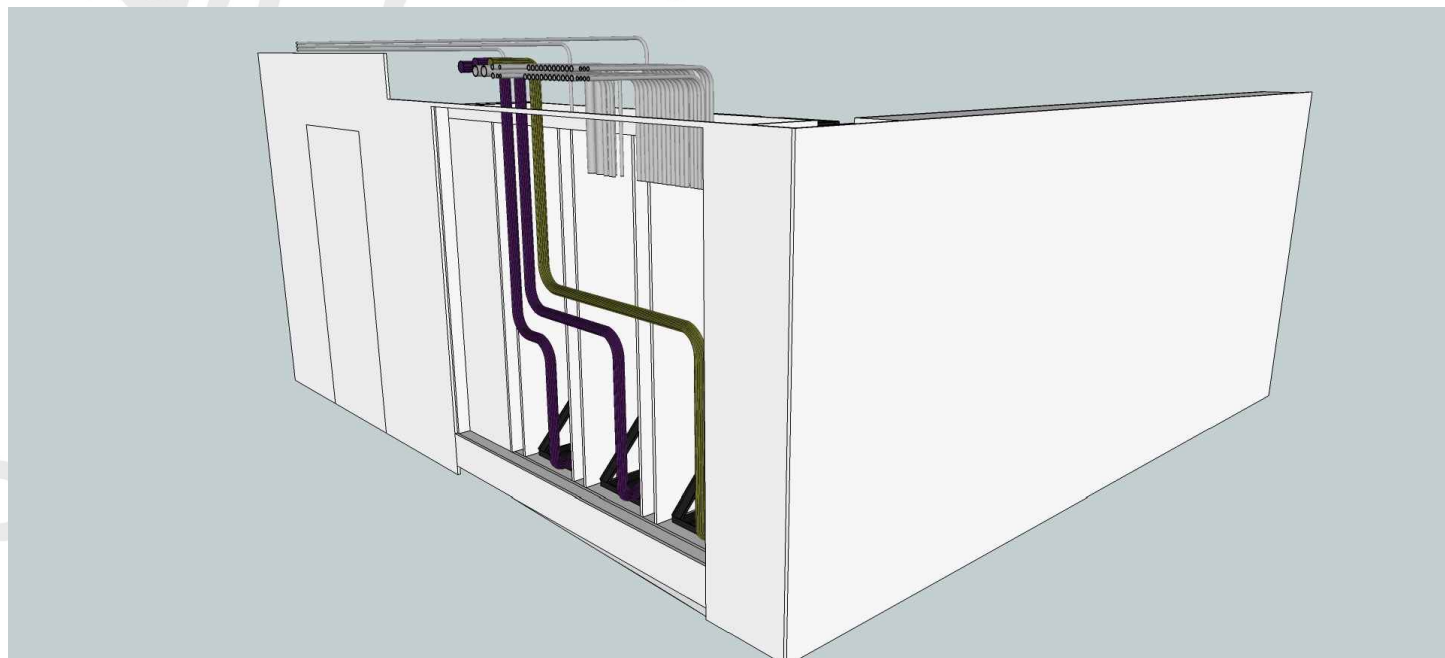
C SIDE VIEW



D SIDE VIEW (SEE THROUGH PANELS)



E TOP CORNER VIEW



F REAR VIEW (SEE THROUGH PANELS)

**SAMPLE PROJECT**  
1234 SAMPLE PROJECT DR  
PLEASANTON, CA 94588

SHEET NAME:  
CONCEPTUAL LAYOUT PLAN  
MAIN DISTRIBUTION FRAME

REVISIONS	BY

DATE: 00-00-00  
SCALE: N.T.S.  
DESIGNER: DESIGNER  
DRAWN: DRAWNBY  
SHEET: